



Tasmania Fire Service

Home Fire Safety

FACT SHEET

Smoke Alarms

for the Deaf and Hard of Hearing

Smoke alarm packages for the Deaf and Hard of Hearing include all the necessary components to give a person a visual and tactile (vibrating) alert to a smoke alarm.

The packages usually consist of three parts:

- A flashing strobe light placed beside the bed. It is connected to a power outlet and has a built in rechargeable battery backup.
- A pillow shaker (connected to the strobe light).
- A smoke alarm.

When the smoke alarm is activated it sends a radio signal, activating the flashing strobe and the pillow shaker.

Note - the smoke alarm still makes loud audible beeps to alert people without a hearing impairment.



Flashing strobe light



Pillow shaker



Smoke alarm

Important

If you require an alarm for the Deaf and Hard of Hearing contact Tasdeaf

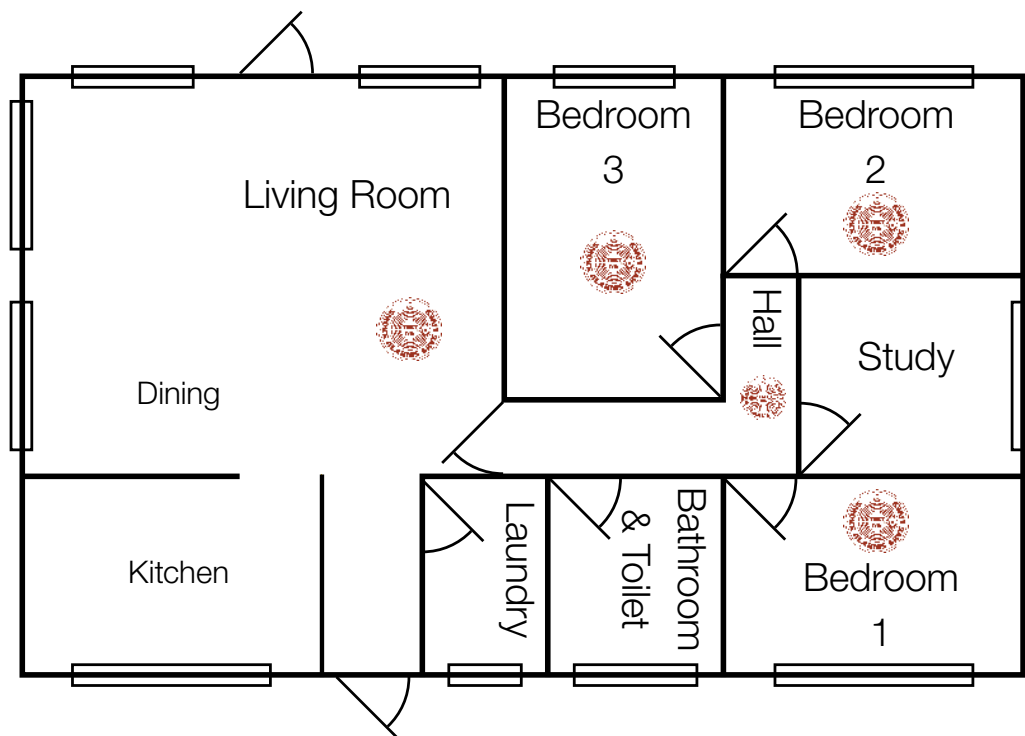
Phone/TTY (03) 6228 1955

FREECALL: 1800 982 212

Email: info@tasdeaf.org.au

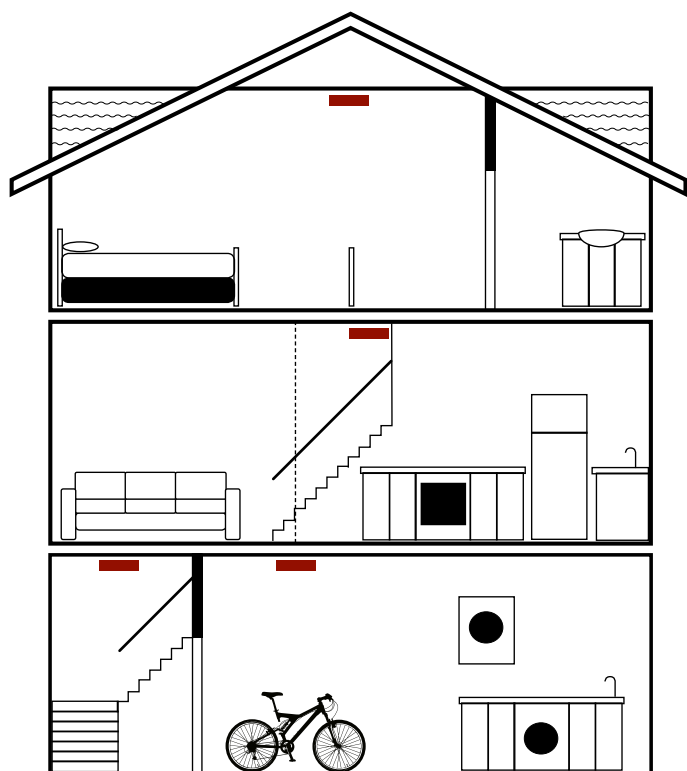
Fax: (03) 6228 1966

Where best to position your smoke alarms



Single Level Homes

Install a photoelectric smoke alarm in every sleeping area (bedroom), hallway and living area.



Multi Level Homes

Install a photoelectric smoke alarm in every sleeping area (bedroom), hallway, living area and on the ceiling at the top of the stairway connecting the levels.



Tasmania Fire Service

Important

All smoke alarms must be replaced every 10 years.

www.fire.tas.gov.au

www.tfseducation.com.au

