



Tasmania Fire Service

# Home Fire Safety

## FACT SHEET

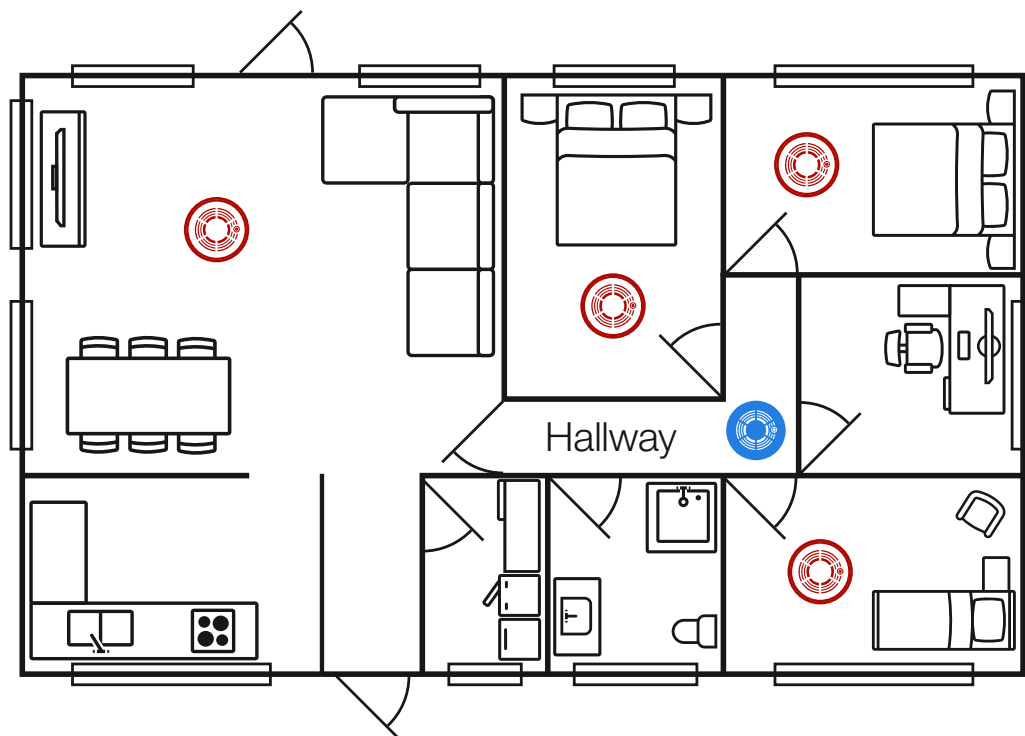
## Smoke Alarms

### Only working smoke alarms save lives!

- You should **install** a smoke alarm in each sleeping area (bedroom), hallway, living area, the top of stairways in a multi-level home.
- **Interconnect** smoke alarms so when one goes off they all go off alerting you and your family at the earliest possible time.
- For **older people** or **people with a disability** smoke alarms should be connected to a personal alarm system.
- Young children are likely to **sleep through** the sound of a smoke alarm, so **you must alert them** to a fire and help them escape to safety.
- **Replace** lead/alkaline batteries yearly or use an alarm with a 10 year battery.
- **240-volt smoke alarms** also have back-up batteries - check with the manufacturer if your model has batteries that need to be replaced regularly, or whether it has a re-chargeable battery.
- All alarms have a **use by date of 10 years**, after this time, the entire alarm must be replaced.
- **Installation** is quick and easy. Follow the manufacturer's instructions. Because smoke rises, mounting in the middle of the ceiling is recommended.
- **Test** alarms monthly.
- **Vacuum** dust from alarms every six months.

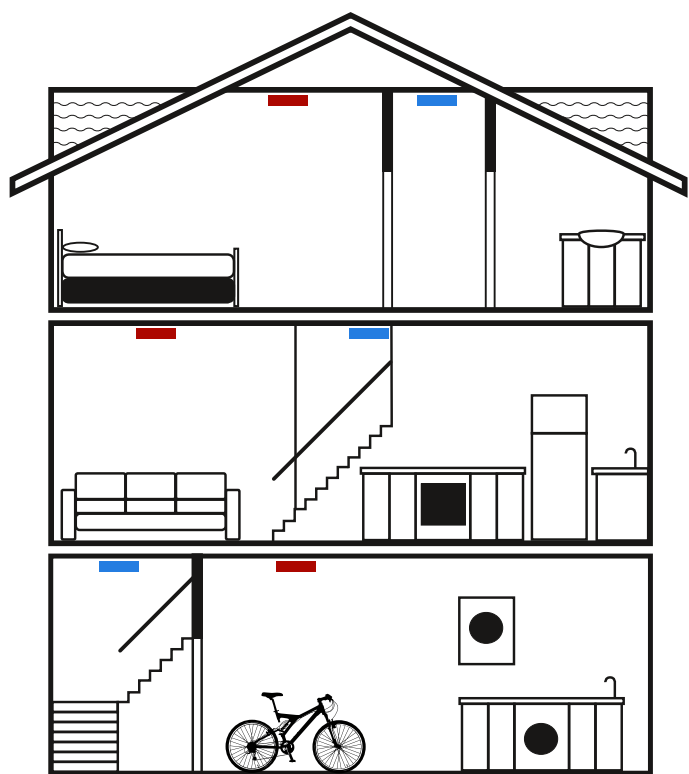







# Where best to position your smoke alarms



## Single Level Homes

Install a smoke alarm in every sleeping area (bedroom), hallway and living area.



-  Required by Law:
  -  A smoke alarm in all hallways.
  -  A smoke alarm at the top of all stairways.
-  Recommended:
  -  All locations shown above and below.

## Multi Level Homes

Install a smoke alarm in every sleeping area (bedroom), hallway, living area and on the ceiling at the top of the stairway connecting the levels.

### Important

#### Interconnect smoke alarms

so when one goes off they all go off alerting you and your family as quickly as possible if there is a fire.



Tasmania Fire Service

[fire.tas.gov.au](http://fire.tas.gov.au)

[tfseducation.com.au](http://tfseducation.com.au)

